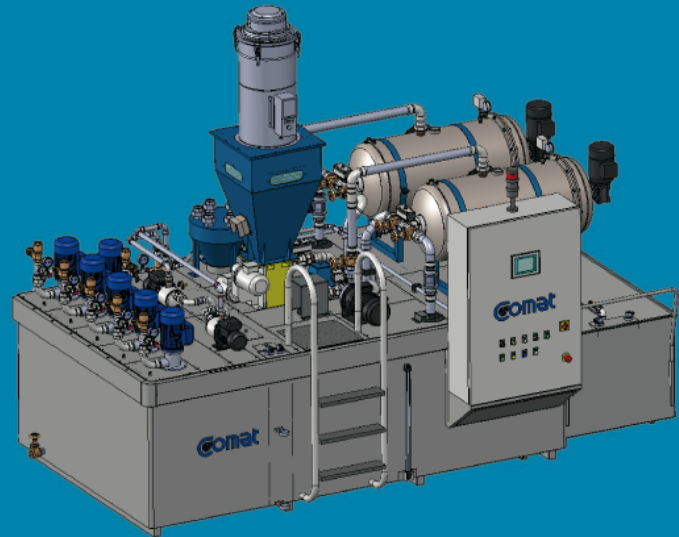


# SPECIFICATION DATASHEET

<b>Filtration Capacity</b>	540 l./min. nominal
<b>Fluid Compatibility</b>	All straight cutting oils (no emulsions)*
<b>Contaminants</b>	Carbide, Cermet, PCD, High Speed Steel, Precious metals, Cast iron, Iron alloys, Copper alloys, Aluminum, Ceramic, Plastics
<b>Filtration Rating</b>	≤ 3 µm nominal
<b>Dimensions</b>	3.8 x 1.8 x h 2.2 m (h. 3.1 m with automatic vacuum system)
<b>Fluid Volume</b>	3500 - 5400 l.
<b>Filter Media</b>	Cellulose Powder, Mineral Powder
<b>Filtering Area</b>	15 m <sup>2</sup>
<b>Filter Media Consumption</b>	10 kg per Work-Cycle

## Mod. 2F25EU-16



## MANAGEMENT SYSTEMS

<b>Workcycle management</b>	Basic, Smart
<b>Sludge removal</b>	Manual or optional automatic system
<b>Filter media loading</b>	Manual or optional automatic vacuum system
<b>Magnetic pre-separator</b>	Optional units available
<b>Temperature control</b>	To be determined by project

## REQUIRED UTILITIES

<b>Voltage</b>	400 Volt 3Ph+N+PE 50 Hz (To be specified by customer)
<b>Installed power</b>	6,5 kW (core unit only)
<b>Compressed air</b>	6 Bar (dry air)

## DEFAULT INTERFACE

<b>Dirty Fluid Inlets</b>	1-1/2" G female connector (pressurized) / DN125 flanged (gravity)
<b>Clean Fluid Outlets</b>	1-1/4" G female connector (single-outlet) / DN65 flanged (multiple-outlet)
<b>Internet</b>	RJ-45 Ethernet Plug (Internet service to be provided by customer)
<b>Compressed air</b>	1/4" G female connector

## COOLANT MANAGEMENT

Fluid collection from machines	Optional collection units available
Fluid distribution to machines	To be determined by project

## CERTIFICATIONS

CE certification	Yes
UL certification	Available as optional

Filtration performance may vary depending upon operating conditions.

Standard operating conditions include: fluid at ambient temperature 20-25°C, kinematic viscosity of 10 cSt at 40°C, max materials contamination of 30 mg/l.

Fluid free of other contaminants such as polymers, paraffins, water. Fluid with limited aging degradation (Total Acid Number < 1 mg KOH/g).

Fluid Compatibility: the liquid must be in Group 2 and have a vapour pressure at the maximum allowable temperature of not more than 0.5 bar, according to Directive 2014/68/EU.

Max working temperature: 60°C.

## CORE UNITS

CORE UNITS	BASIC	SMART
Automatic work-cycle	✓	✓
Eco-mode	optional	✓
Email notifications		✓
Power interruptions management	optional	✓
Automatic Electronic Flow Regulation		✓
Software and remote monitoring setup		
Remote monitoring optimisation and control		optional

